

SOFITEL

SOFITEL BERLIN
KURFÜRSTENDAMM

PRÄSENTATION



SOFITEL
HOTELS & RESORTS

01

THE HOTEL

UNIQUE SELLING POINTS



THE HOTEL

UNIQUE SELLING POINTS

The elegant Sofitel Berlin Kurfürstendamm is situated right in the heart of the City West area, within striking distance of the renowned Kurfürstendamm shopping quarter. A showcase for a unique fusion of art, architecture and design. The impressive 17-storey stone façade constructed from Kirchheim shell limestone is a real eyecatcher.

- 5 star Superior Hotel
- 267 rooms and 44 suites
- 16 conference rooms and 2200m² meeting space
- exclusive Sofitel Club with breathtaking views over Berlin
- Restaurant Le Faubourg



THE HOTEL IMPRESSIONS



02

LOCATION & ACCESS

ADDRESS, CONTACT, DESTINATION
INFORMATION



LOCATION & ACCESS





Address

Sofitel Berlin Kurfürstendamm
Augsburgerstraße 41
10789 Berlin
Germany

Contact

Telephone: 0049 (0) 30 800 999 0
Fax: 0049 (0) 30 800 999 99
H9387-FO5@sofitel.com



-  Airport Berlin Tegel 10km
-  Airport Berlin Schönefeld 23km
-  U-Bahnstation Kurfürstendamm 100m
-  S-Bahnstation Zoologischer Garten 500m



THE HOTEL

Destination Information

- Berlin ist one of the most important hubs for politics, entertainment, science and culture in Europa
- Number one tourist destination in Germany
- Number three tourist destination in Europe
- ICC Berlin one of the largest convention centers in the world

NEARBY

Famous sites:

Boulevard Kurfürstendamm, Tiergarten, Kaiser-Wilhelm Memorial Church, KaDeWe , Zoo Berlin, Aquarium Berlin

Museums:

C/O Berlin, Helmut Newton, Bauhaus Museum, Camera Work

Performances:

Stage Theater des Westens, Schaubühne, Staatsoper im Schiller Theater, Renaissance Theater, Oper Berlin



03

ROOMS & SUITES

267 ROOMS & 44 SUITES



ROOMS & SUITES

STANDARD ROOMS

The elegante, contemporary design of the rooms feature captivating warm colours and plenty of wood. Artworks by Junior Toskanelli were commissioned specially for the hotel to create exceptional highlights in each room. Furthermore are all our rooms and suites with a bose-system, nespresso-machine and Hermés or Lanvin-beauty products equipped.

The Luxury Executive Rooms are situated in the hotel's executive club. Guests can enjoy the comforts of the Executive Lounge, which include a pre-check-in service, drinks and an exquisite continental breakfast.

Superior Rooms
45 rooms
35 – 40 m²



Luxury Rooms
189 rooms
40 – 52 m²



Luxury Executive Rooms
33 rooms
40 – 52 m²



ROOMS & SUITES

PREMIUM ROOMS, JUNIOR & PRESTIGE SUITES

The 44 suites at the Sofitel Berlin Kurfürstendamm exude impressively timeless elegance and gleaming simplicity. The spacious Luxury Premium rooms and Junior Suites offer the exclusive comfort expected in a five-star hotel. The Prestige Suites boast outstanding views and an exceptional design. In addition, guests on the 11th floor can enjoy the comforts of the Executive Lounge.

Luxury Premium Room
9 rooms
40 – 52 m²



Junior Suite
15 suites
56 – 68 m²



Prestige Suite
10 suites
70 – 90 m²



ROOMS & SUITES

OPÉRA & IMPÉRIAL SUITES

In the eight semicircular Opera Suites with their enormous panoramic windows and views onto the Kurfürstendamm and “Kranzler Eck”, Kleihues set his sights on individuality and presents a range of different forms and materials.

In the two Impérial Suites on the 10th and 11th floors of the hotel, guests not only enjoy fantastic views over the rooftops of Berlin, but also discover the ultimate expression of a design feature that winds its way throughout the entire building, threedimensional fretwork meanders.

Opéra Suite
8 suites
75 – 100 m²



Impérial Suite
2 suites
100 – 110 m²



EXECUTIVE LOUNGE

The Club Lounge provides our guests with space to relax as well as breathtaking views across Berlin - supplemented by attentive service à la Sofitel.

The club's benefits include a pre-check-in service, separate check-in/check-out, an exquisite continental breakfast, drinks and snacks, WiFi, administrative and concierge service.



04

RESTAURANT, BAR &
LOUNGE



RESTAURANT, BAR & LOUNGE

RESTAURANT LE FAUBOURG

The Le Faubourg restaurant brings a touch of French charm to the City West district. Headed by Chef de Cuisine Felix Mielke, it offers French cuisine with a twist, where traditional cooking is combined with modern techniques. In this innovative French restaurant in Berlin, the best local meat and fish are served paired with rare French and German wines. The restaurant is marked with 14 points at the Gault-Millau-Guide 2016.



RESTAURANT, BAR & LOUNGE

RESTAURANT ST. GERMAIN

With its large panoramic windows, the “St. Germain” breakfast and buffet restaurant offers a space flooded with light for a perfect start to the day. Two large buffets and an open kitchen ensure an opulent breakfast that ranks amongst the best and most extensive in Berlin. The Tea Room, fully equipped with Ronnefeldt products, is another culinary highlight.



RESTAURANT, BAR & LOUNGE

LOUNGE BAR LE FAUBOURG & LIBRARY

The Lounge Bar Le Faubourg exudes a French casual-chic style. The bar invites to relax with design classics from the Bauhaus era, such as the Vitra Cité chair by Jean Prouvé and the famous Gropius chair. During the day, guests can enjoy a selection of home-made patisserie and exclusive tea varieties. Led by Bar Chef Nico Wieduwilt, the team also serves up new wine cocktails and a different aperitif every day.

The Library presents an intimate retreat that doubles as the ideal place to hold a range of events, such as private dinners and receptions.



05

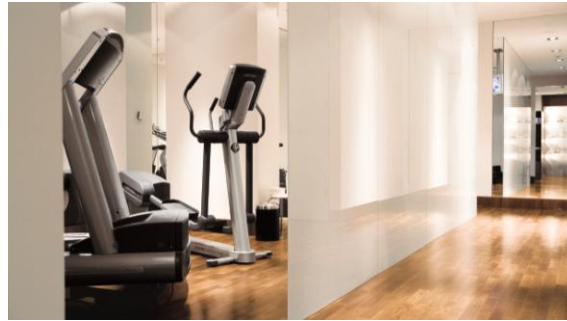
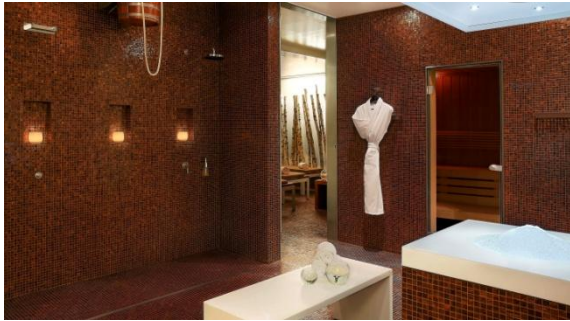
WELL-BEING & FITNESS

PURE MOMENTS OF PLEASURE



FITNESS & WELLNESS

The health and fitness area on the 2nd floor includes a gym with cardio equipment, a selection of weights, a sauna, steam bath, foot baths and an ice fountain. Treatment rooms are available for massage therapies and beauty treatments.



06

INSPIRED MEETINGS

INSPIRED BY YOU – STAGED BY US



INSPIRED MEETING

INSPIRED BY YOU – STAGED BY US

Two floors of the building offer 16 elegantly designed conference rooms including the Ballroom Concorde, a large event space with parquet flooring, mirrored walls and room for up to 350 people. The most commanding of our rooms is the semicircular Salon Opéra with panoramic views onto the Kurfürstendamm. The hotel offers a total of more than 2,200 square metres of elegant, airy conference rooms that are also easily subdivided. InspiredMeetings™ concierges are in charge of the comprehensive equipment system as well as the Saint Germain buffet restaurant, which can be reserved exclusively for special events.



SOFITEL
HOTELS & RESORTS