



Dom Pedro
Lisboa

BUSINESS & LEISURE HOTEL

FACT SHEET



LOCATION

The Dom Pedro Lisboa is a 5-star hotel located in the centre of Lisbon, with a stunning view over the city, the Tejo River and S. Jorge Castle. Located directly in front of the Amoreiras Shopping Center and close to the El Corte Inglés. Only 7 km from Lisbon's airport.

ACCOMMODATIONS - 263 rooms

158 Classic Rooms - Measuring 30 sqm and featuring a king size bed, some with a superb view over Lisbon and the Tejo River.

9 Family Classic Rooms - Two rooms connected to each other, ideal for families due to their size and proximity to the rest of the family.

12 Triple Rooms - Triple rooms are perfect for families visiting Lisbon. These rooms accommodate three individual beds or double king size bed and individual bed. Fully equipped bathroom.

75 Tower Rooms - Located on the hotel's top floors, these rooms offer an extraordinary view over Lisbon and complimentary access to the SPA and VIP lounge.

8 Suites - Located on the higher floors of the hotel with 57 sqm, comprised of two separate spaces, an entrance hall, living room and bedroom, some with a superb view over Lisbon, the Tejo River and São Jorge Castle.

1 Presidential Suite - Occupying the top floor with a 360° view over the entire city and the Tejo River.

All rooms are equipped with:

Wi-Fi, king size or twin beds, interactive TV HD, Pay TV, amenities D' AVEIA, hairdryer, umbrella, digital safe, work desk, telephone, minibar, coffee machine, air conditioning, electric power at 220V, kimono and iron/ ironing board.

RESTAURANTS & BARS

Bistrot "Le Café" - Continental buffet breakfast from 6:30am to 10am - weekend until 10:30am
A Buffet with a taste of Portugal from Monday to Friday, each day features flavours from a different region in Portugal. Lunch: 12:30pm to 3pm | Dinner: 7:30pm to 10:30pm
"Le Café" Bar - Sandwiches & Snacks | From 10am to 1am

Ristorante "Il Gattopardo" - The top Italian restaurant in Lisbon. Smoking area.
Lunch: from 12:30pm to 3pm | Dinner: from 8pm to 11pm. Open from Monday to Sunday.
"Il Gattopardo" Bar - Open everyday, from 12pm to midnight

SPA AQUAE

Indoor heated pool with chromotherapy, treatment and massage rooms, fitness centre, sauna Turkish bath and Jacuzzi. From 9:00am to 7:30pm.

MEETINGS & EVENTS

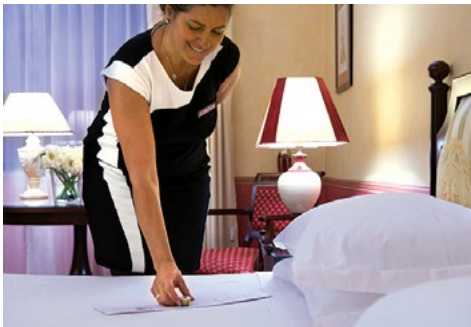
16 multipurpose rooms with capacity up to 400 people in theatre style, most rooms with daylight, private check-in for groups and business center fully equipped.

HOTEL FACILITIES

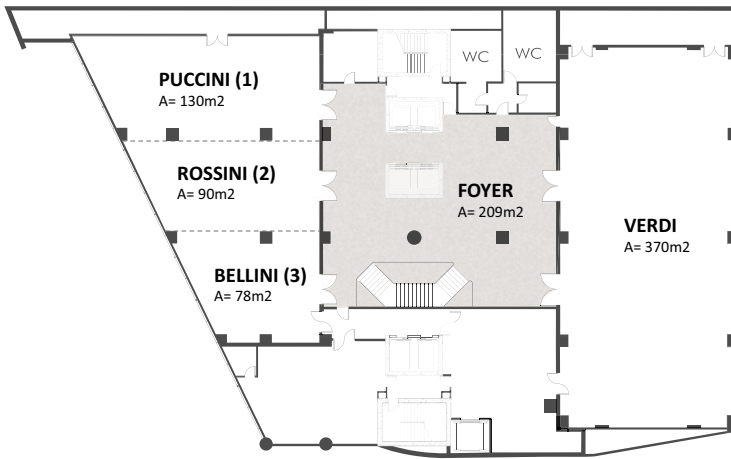
24 hour reception, luggage service, parking garage, valet parking, car washing service.
24 hour room service, regular and express laundry service.
24-hours a day for booking shuttles to and from the airport or organising sightseeing tours
Wi-Fi available all over the hotel. Hotel lobby room with PC and free internet access.

Business Center on the 2nd floor with free internet access. From 9:00am to 6:00pm.

Check-in: from 2pm | Check-out: until 12pm

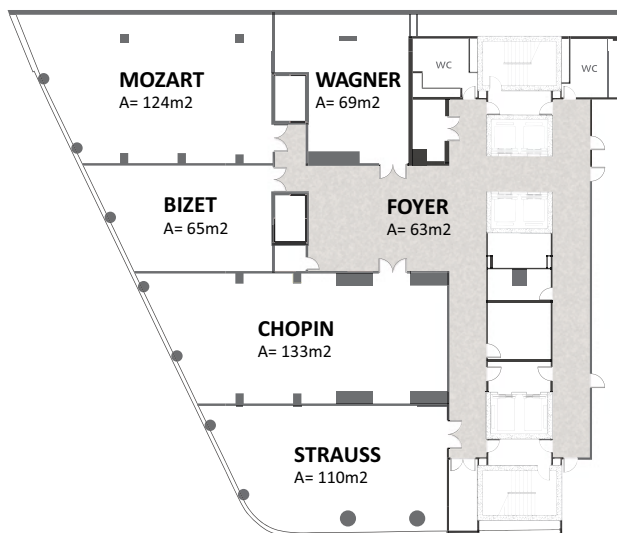


MEETING & EVENTS - 1ST FLOOR



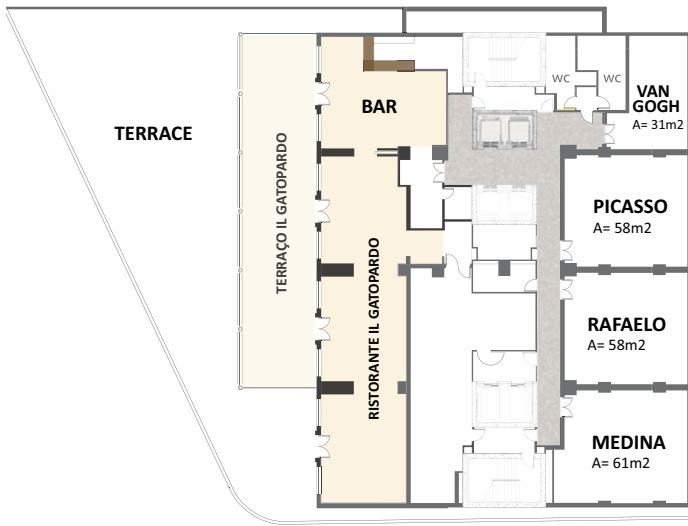
	AREA		CEILING HEIGHT	THEATRE	CLASSROOM	"U" SHAPE	CABARET	COCKTAIL	BANQUET table 12 pax	BUFFET table 12 pax	BOARDROOM
	m2	ft2									
VERDI	370	3.99	3.89	400	235	99	132	400	252	216	114
PUCCHINI (1)	130	1.40	3.27	100	70	36	42	120	96	84	42
ROSSINI (2)	90	972	3.27	50	48	30	24	100	60	48	36
BELLINI (3)	78	842	3.27	40	24	18	18	35	48	36	22
(1 + 2)	196	2.12	3.27	78	---	---	66	200	156	132	---
(2 + 3)	145	1.58	3.27	66	---	---	42	140	108	84	---
OPERA (1+2+3)	298	3.22	3.27	110	---	---	90	300	204	180	---

MEETING & EVENTS - 2ND FLOOR



	AREA		CEILING HEIGHT	THEATRE	CLASSROOM	"U" SHAPE	CABARET	COCKTAIL	BANQUET table 12 pax	BUFFET table 12 pax	BOARDROOM
	m2	ft2									
MOZART	137	1.48	2.47	110	60	36	30	100	96	60	36
BIZET	73	788	2.47	50	36	24	18	40	48	36	24
CHOPIN	144	1.55	2.49	110	72	42	36	100	96	72	42
WAGNER	68	734	2.39	50	24	18	18	40	48	36	24
STRAUSS	117	1.26	2.50	110	63	36	30	100	84	60	36

MEETING & EVENTS - 3RD FLOOR

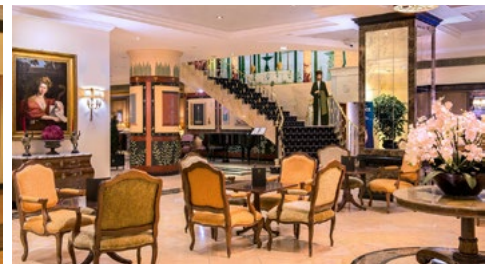


	AREA		CEILING HEIGHT	THEATRE	CLASSROOM	"U" SHAPE	CABARET	COCKTAIL	BANQUET table 12 pax	BUFFET table 12 pax	BOARDROOM
	m ²	ft ²									
VAN GOGH	31	334	2.90	---	---	---	---	---	---	---	114
PICASSO	58	626	2.84	40	36	24	18	40	36	36	24
RAFAELLO	58	626	2.84	40	36	24	18	40	36	36	24
MEDINA	61	658	2.90	40	36	24	18	40	36	36	24

RISTORANTE "IL GATOPARDO"

	AREA	CEILING HEIGHT	THEATRE	CLASSROOM	"U" SHAPE	CABARET	COCKTAIL	BANQUET table 12 pax	BUFFET table 12 pax	BOARDROOM
RESTAURANT (1)	119	626	2.85	---	---	---	---	80	50	24
TERRACE(2)	117	626	2.85	---	---	---	100	80	60	30
(1+2)	236	626	---	---	---	---	200	160	110	---

MEETING & EVENTS - LOBBY



	AREA		CEILING HEIGHT	THEATRE	CLASSROOM	"U" SHAPE	CABARET	COCKTAIL	BANQUET table 12 pax	BUFFET table 12 pax	BOARDROOM
	m ²	ft ²									
ALGARVE	30	324	2.90	---	---	---	---	---	---	---	---
LISBOA	32	345	2.90	---	---	---	---	---	---	---	---
VILAMOURA	45	486	2.90	---	---	---	---	---	---	---	12
MADEIRA	23	248	2.90	---	---	---	---	---	---	---	12