

TIVOLI

PALÁCIO DE SETEAIS

SINTRA
HOTEL



ELEGANCE AND ATMOSPHERE OF THE XVIII CENTURY

ENJOY A DREAM COME TRUE IN THIS STUNNING PALACE WITH LUSH
GARDENS WHERE MEMORABLE STORIES AND CENTURIES
OLD SECRETS GO HAND IN HAND

Tivoli Palácio de Seteais

Rua. Barbosa du Bocage 8 - Seteais | 2710-517 Sintra, Portugal

T. (+351) 21 923 32 00 · F. (+351) 21 923 42 77

palacioseteais@tivolihotels.com

tivolihotels.com



THE LEADING HOTELS
OF THE WORLD®

Tivoli Palácio de Seteais

Much more than just a five-star hotel, Tivoli Palácio de Seteais is a gem of period architecture taking you back to the romance and luxury of the Age of Enlightenment. The palace is an authentic and whimsical base for discovering Sintra, a UNESCO World Heritage Site.

Each room is outfitted with its own unique character from resplendent frescoes to rich tapestries and other adornments of rare beauty. Enjoy a private dining experience in a palace ballroom or by the pool.

Drink up enchanted views of the mist-shrouded Sintra Mountains or the palace's lush gardens from the tennis court, your afternoon tea table or the new Anantara Spa.



Location

The hotel is located in Sintra, a resort town and UNESCO World Heritage Site, next to the famous must-see attraction Quinta da Regaleira and 1.5 kilometres from Sintra train station. Sintra is situated 22 kilometres from Lisbon Airport and 15 kilometres from the beach town Cascais.

GPS: 38°47'43.0"N 9°23'39.6"W



Accommodation

30 Rooms, including:

- 1 Diplomatic Suite
- 5 Deluxe Room Valley View

- 6 Superior Room Valley View
- 5 Superior Room Pool View
- 13 Superior Room Garden View

Diplomatic Suite

Sumptuously furnished, this suite with its XVIII and XIX century decorations is inspired by Queen Maria I, "the Good Mother" of Portugal. The perfect palatial retreat features a living area with an open-space oce, lounge area and a balcony overlooking the swimming pool. Luxuriate in splendour-filled relaxation, from steamy baths to fresh espresso. Take advantage of 24-hour butler service catering to your every whim.



Deluxe Room Valley view

Deluxe Valley View Rooms boast panoramic views of the Sintra Mountains, the valley and palace pool. Indulge in expansive space and XVIII and XIX century trappings. Balconies in some rooms, butler service and a welcome platter of bottled water and fruit of the season promise royal treatment from start to finish.



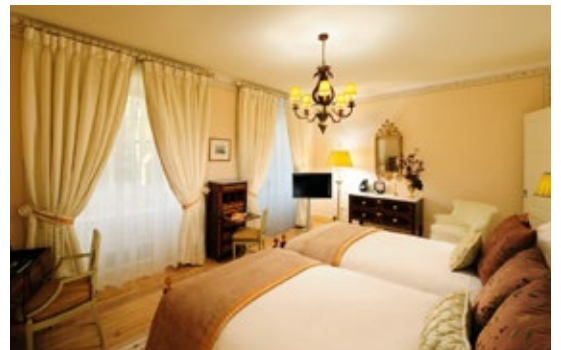
Superior Room Valley view

Outfitted in polished wood and plush textures, these elegant spaces are the true definition of "fit for a king". Warm up from cool Sintra nights with hot refreshments from a Nespresso coffee machine or a soothing bathtub soak. Wake up in the easeful sophistication of a palatial hideaway perfectly positioned overlooking verdant valley.



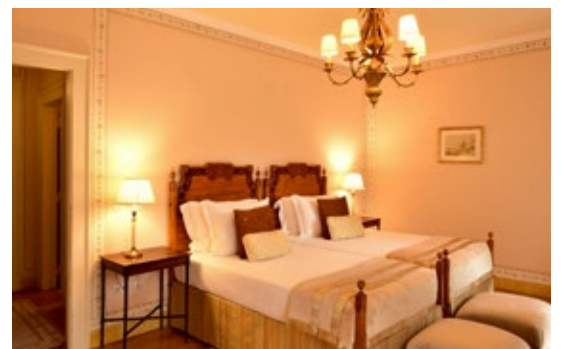
Superior Room Pool view

Unique XVIII and XIX century ornaments and rich wood furnishings combine for a true reflection of Seteais Palace's incomparable pomp. Quiet down with sensual baths or fresh refreshments from a Nespresso coffee machine in a magnificent haven. Savour a welcome platter fruit of the season and bottled water gazing over luxurious swimming pool views.



Superior Room Garden view

Marvel at a leafy garden oasis from your private palace sanctuary. Rich upholstery from days of yore match peaceful seclusion for a fascinating peek into Sintra's past. Enjoy hot drinks from your Nespresso coffee machine with 24-hour in-room dining, and a welcome platter of fruit of the season and bottled water. Enjoy the most splendid version of relaxation and privacy.



Summary of Rooms and Suites

Type of Room	Nº	Area	Type of Room
Superior Room Garden View	13	21 sqm - 32 sqm	8 with double T/Bed 5 with twin T/Beds
Superior Room Pool View	5	21 sqm - 32 sqm	2 with double T/Bed 3 with twin T/Beds
Superior Room Valley View	6	21 sqm - 31 sqm	2 with double T/Bed 4 with twin T/Beds
Deluxe Room Valley View	5	25 sqm - 34 sqm	Twin T/Beds
Diplomatic Suite	1	47 sqm	Double T/Beds

Premium Amenities

Diplomatic Suite and Deluxe Rooms	Personal Butler service Unique Tea & Cookies in room welcome Deluxe Hermès amenities Fresh fruit replenished daily Daily bottled water	24 hour room service Twice- daily housekeeping with nightly turndown service I-pod docking station upon request Tennis courts
Superior Rooms	Fresh fruit in room welcome Portus Cale amenities Daily bottled water 24 hour room service	Twice- daily housekeeping with nightly turndown service I-pod docking station upon request Tennis courts

Hotel Services

- 24-hour in-room dining
- Complimentary outdoor parking
- Helicopter landing facilities
- Limousine transfer from Lisbon
- Printer and scanner available
- Complimentary WiFi in all rooms and public areas
- Customised check-in with welcome lemonade and traditional local sweet Queijada in beautiful reception area
- Babysitting services available upon request
- Entertainment kits for children and babies

Leisure Services

- Tennis court
- Swimming pool
- Reading room
- Anantara Spa and Wellness Centre





Restaurants and Bars

Seteais Restaurant

A gourmet dining experience enriched with breathtaking scenery. Enjoy exquisite vistas of the Sintra Mountains over flourishing gardens from your breakfast table. Frescoes and oil paintings add extraordinary beauty. Dine on epicurean Portuguese and international delights, with live piano in the evenings for a truly decadent ambience. The restaurant can cater up to 120 people for special gatherings and celebrations.

Breakfast: 8 am – 11 am

Lunch: 12.30 am – 3 pm

Dinner: 7.30 pm – 10 pm

Bar

Refresh with impressive Sintra vistas and excellent sips. With its privileged location, this bar has unparalleled panoramic views of Sintra. Sit back at the end of the day on the delightful outside terrace with a glass of local wine, cocktail or your favourite hot drink. Sink into superbly appointed indoor surrounds or al fresco on the terrace.

Opening hours: 11 am – 12 pm

Colares Doc

Indulge in an exclusive wine lovers experience at the Seteais Colares DOC room, our elegant new tasting den. Sip exclusive vintages from Sintra's neighbouring wine region Colares, where a unique ageing process reveals smooth complexity and vivid flavour creating "what may well be Portugal's most distinctive still wines," according to the New York Times. Sit back in plush surroundings furnished with decorations from the Regional de Colares Winery. Enjoy wine tasting menus accompanied by tapas or a gourmet dinner with an impeccable choice of local cellared pairings.

Opening hours: 11 am – 12 pm



Tivoli Experiences

Live a series of genuine experiences, truly dedicated to our guests and their tastes, time, expectations and travel motivations. Our experiences are designed to bring out the best, the most original and authentic moments that each destination has to offer. Enjoy a horse drawn carriage ride through the Sintra Mountains, relish mouthwatering regional delicacies and marvel at picturesque nature and unique highland landscapes.



Dining Delight

For the perfect wedding proposal or once in a lifetime indulgence, Dining Delight, our customisable dining experience, is a must. Choose your preferred setting on the property – in a pergola by the pool overlooking Sintra or an elegant palace room decorated with frescoes by famous French painter Jean-Baptiste Pillement. Sip Champagne followed by an exclusive five-course tasting menu with wine pairings, tailored to your specific tastes, served by a private waiter.



Cooking Classes

Discover the treasures of Portuguese cuisine and the rich biological landscape in a private cooking class. Impress friends and family back home by learning a classic fish and rice dish with aromatic herbs from our local garden and fresh coastal catches. The secret ingredient? Lemons plucked right from our property's trees. Enjoy your creation afterwards by the pool paired with special wine from nearby vineyards in Colares.



Tivoli Weddings

From ceremony to banquet and honeymoon bliss, count on our Experience Team to organise your dream wedding. Float through the day knowing all the details are covered, from palace accommodation for the entire wedding party to magical photography settings on the front lawn, in the garden and expansive ballrooms. At Tivoli Palácio de Seteais, fairytales do come true.



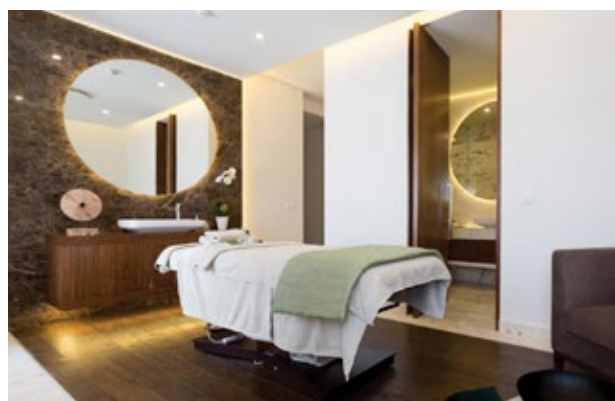
Seteais Tennis Club

Get active against awe-inspiring mountains. Tighten up your tennis skills. Our professional coach offers classes for children, teens and adults five days a week in lush green surrounds. Plan the perfect workout with a former pro or a personal trainer. Private or group lessons, the choice is yours.



Anantara Seteais Spa and Wellness Centre

Savour Sintra's charm and enchantment from the most relaxing location: a contemporary spa set in lavish gardens. The Anantara Seteais Spa and Wellness Centre offers pampering treatments fit for royalty, combining authentic indulgences with restorative holistic awakenings. Allow mind, body and spirit to bond amidst nature, as you drink up fresh mountain air and idyllic forest surrounds.



Opening hours: 11 am - 7 pm

Leisure, Entertainment and Sports

- Historic centre - 15 min. walk
- Quinta da Regaleira - 1 min. walk
- Cinema - 1 hour. drive
- Casino - 1 hour. drive
- Praia Grande beach - 20 min. drive
- Golf - 6 courses in a 20-km radius with special conditions for guests
- Pena Palace - 45 min. walk or drive
- Monserrate Palace - 12 min. drive

Conferences and Meetings at the Tivoli Palácio de Seteais

The Tivoli Palácio de Seteais has two meeting rooms and one restaurant area holding a maximum of 250 people. All rooms boast abundant natural light and state-of-the-art audiovisual equipment, allowing for a wide range of events, while taking full advantage of the palace's stunning surroundings and unique setting.



Support Infrastructures

- 2 rooms equipped with the latest technology
- Reception facilities for groups

Services Available

- WiFi in all areas of hotel
- Complimentary outdoor parking

Summary of Rooms

Rooms	L x H x W	Dimensions	Banquet	Cocktails	School	Theatre	U Table
Royal Room	17 x 6 x 4	102 sqm	80	100	48	90	36
Pillement	6 x 6 x 4	36 sqm	20	30	10	20	11
Oval Room	-	50 sqm	20	-	-	-	-
Seteais Restaurant	-	140 sqm	120	150	-	-	-
Seteais Restaurant + Oval Room	-	190 sqm	140	150	-	-	-
Seteais Restaurant + Oval Room + Terrace	-	230 sqm	200	200	-	-	-

Tivoli Palácio de Seteais

Rua. Barbosa du Bocage 8 - Seteais | 2710-517 Sintra, Portugal
 T. +351 21 923 32 00 · F. +351 21 923 42 77
 tivolihotels.com