



The home of seminars
Châteauform®

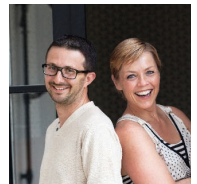
Château de Fillerval



This 18th Century castle, set among its vast leafy estate north of Paris, will take you a journey. Originally a fortified bastion, the château de Fillerval was home to a string of astronomers and cartographers, including the Cassini family. This inviting residence, delicately encircled by its own babbling brook, is bursting with cosy, welcoming spaces for your meetings, executive committee sessions and other creative workshops.

Follow in the footsteps of Magellan and navigate back in time among the 17 meeting rooms, from the map gallery to the travellers gallery and through to the observatory (now the 300 sq.m. Cassini amphitheatre). At the end of the Milky Way step in to the World café, a space designed to encourage your participants to open up to each other and harvest new ideas.

Enjoy the peace and quiet of one our 77 bedrooms nestled in the 15-hectare grounds as you soak up the calm of Fillerval's countryside setting.



-
Your host couple: Sandrine & Arnaud. Your : Sébastien.



Château de Fillerval - Rue du Lavoir - 60250 Thury-sous-Clermont