

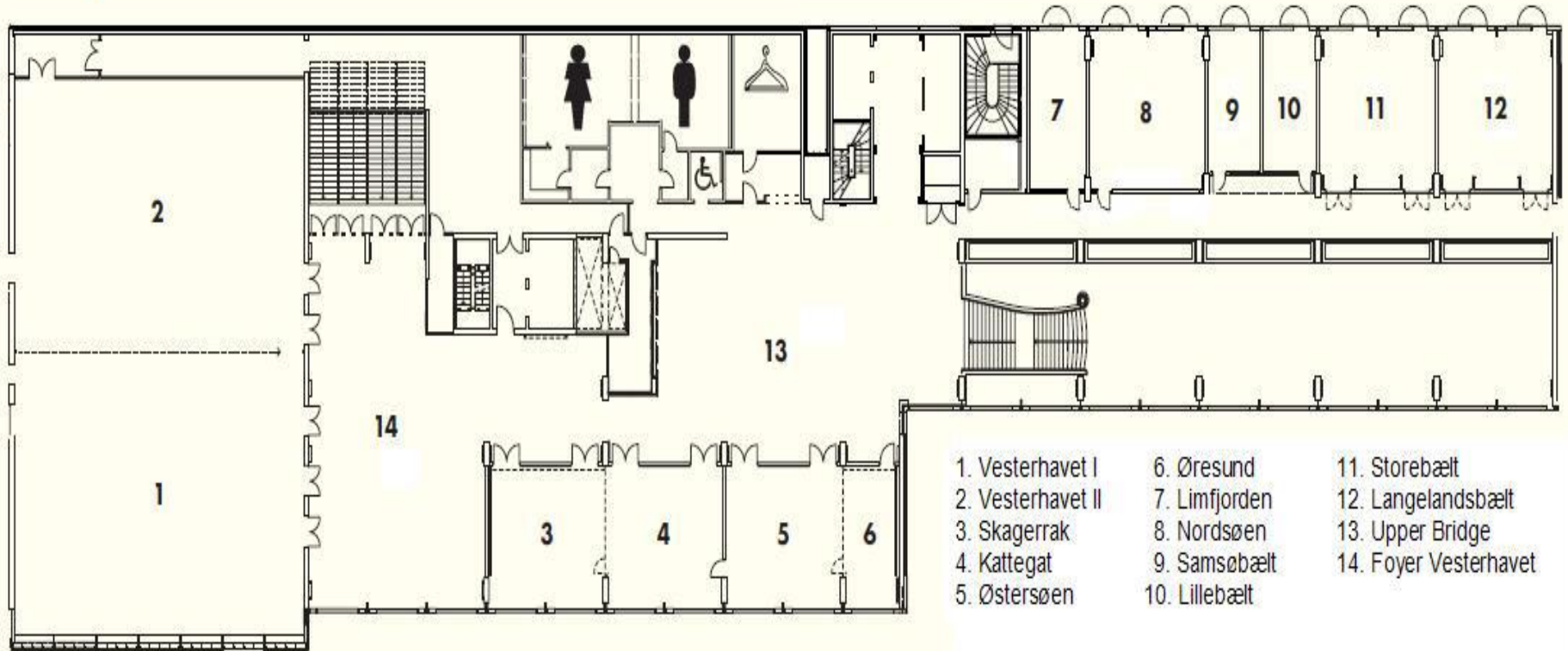


Copenhagen Marriott Hotel

Floorplan



Floorplan



Capacity



| Lokale | m2 | Theatre Style. | Classroom | Board Room | U-Shape | Dinner | Cabaret |
|---------------------|-----|----------------|-----------|------------|---------|--------|---------|
| 1 Vesterhavet I | 260 | 300 | 150 | - | 60 | 200 | 120 |
| 2 Vesterhavet II | 260 | 300 | 150 | - | 60 | 200 | 120 |
| Vesterhavet I & II | 520 | 600 | 360 | - | 120 | 400 | 250 |
| 3 Skagerrak | 50 | 48 | 27 | 20 | 24 | 40 | 32 |
| 4 Kattegat | 50 | 48 | 27 | 20 | 24 | 40 | 32 |
| Kagerrak & Kattegat | 100 | 96 | 60 | 42 | 54 | 80 | 48 |
| 5 Østersøen | 50 | 48 | 27 | 20 | 24 | 40 | 32 |
| 6 Øresund | 23 | 20 | 9 | 15 | - | 16 | - |
| Østersøen & Øresund | 73 | 68 | 36 | 27 | 30 | 60 | 40 |
| 7 Limfjorden | 25 | 20 | 9 | 15 | - | 16 | - |
| 8 Nordsøen | 58 | 54 | 30 | 20 | 27 | 40 | 24 |
| 9 Samsøbælt | 25 | 20 | 9 | 15 | - | 16 | - |
| 10 Lillebælt | 25 | 20 | 9 | 15 | - | 16 | - |
| 11 Storebælt | 58 | 48 | 27 | 19 | 24 | 40 | 24 |
| 12 Langelandsbælt | 58 | 48 | 27 | 19 | 24 | 40 | 24 |



See you at Copenhagen Marriott Hotel

Contact:

Copenhagen Marriott Hotel
Kalvebod Brygge 5
DK-1560 Copenhagen V

P: +45 8833 9900

E: mhrs.cphdk.micegroup@cphmarriott.dk