

CONRAD[®]

ALGARVE

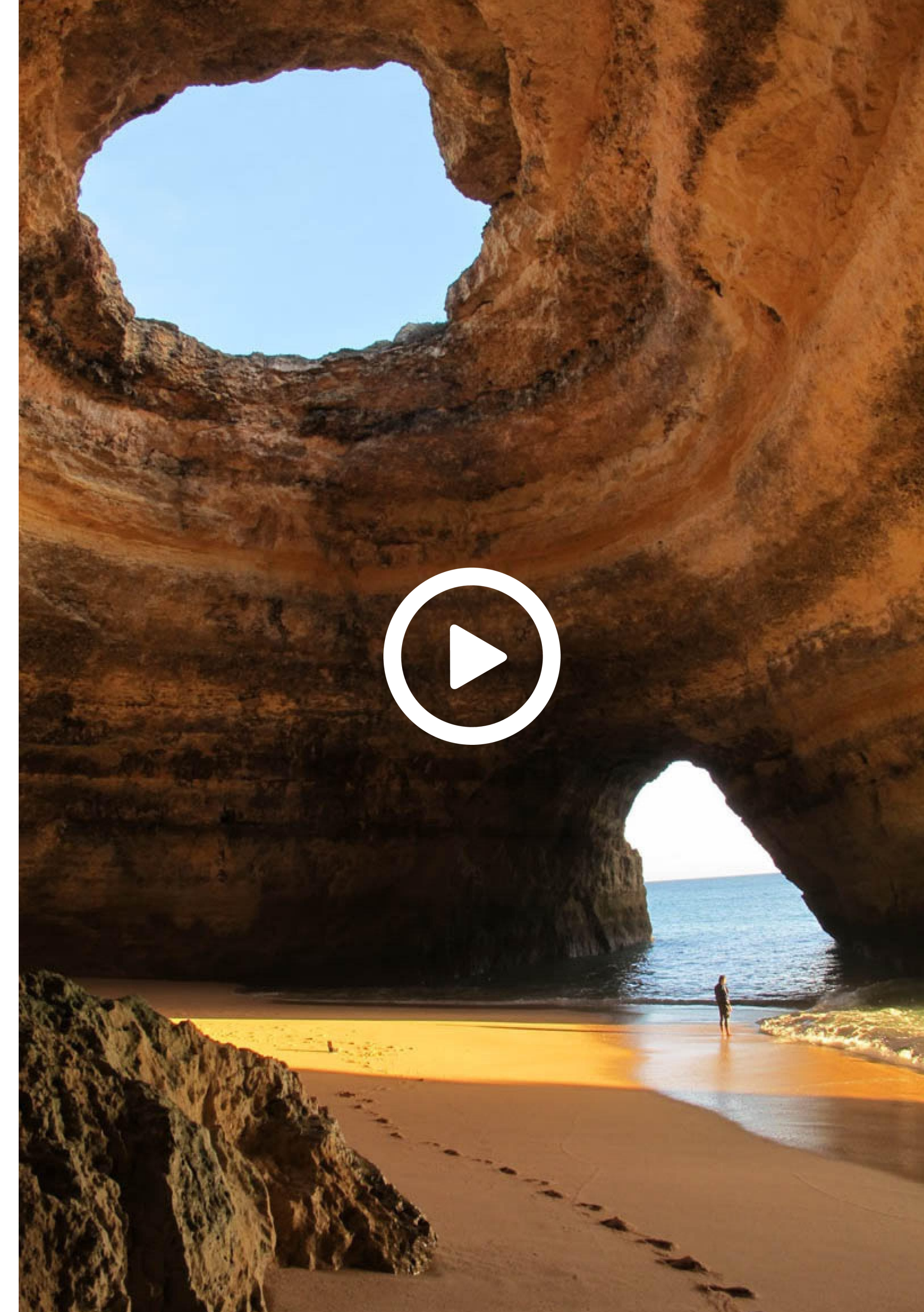
NEVER JUST STAY. STAY INSPIRED.



Portugal, a country to discover

A country where you can find a huge diversity of landscapes and environments in a small area: sandy beaches as far as the eye can see, golden plains and mountains, vibrant and cosmopolitan cities and a millennial heritage.

- The oldest country in Europe with 900 years of history and an exceptional range of different landscapes
- 3000 hours of sunshine per year and 850kms of splendid beaches bathed by the Atlantic Ocean
- Unique cultural heritage, where tradition and modernity blend together in perfect harmony.
- Superb cuisine, fine wines and hospitable people that make this a tourist paradise of the highest quality.

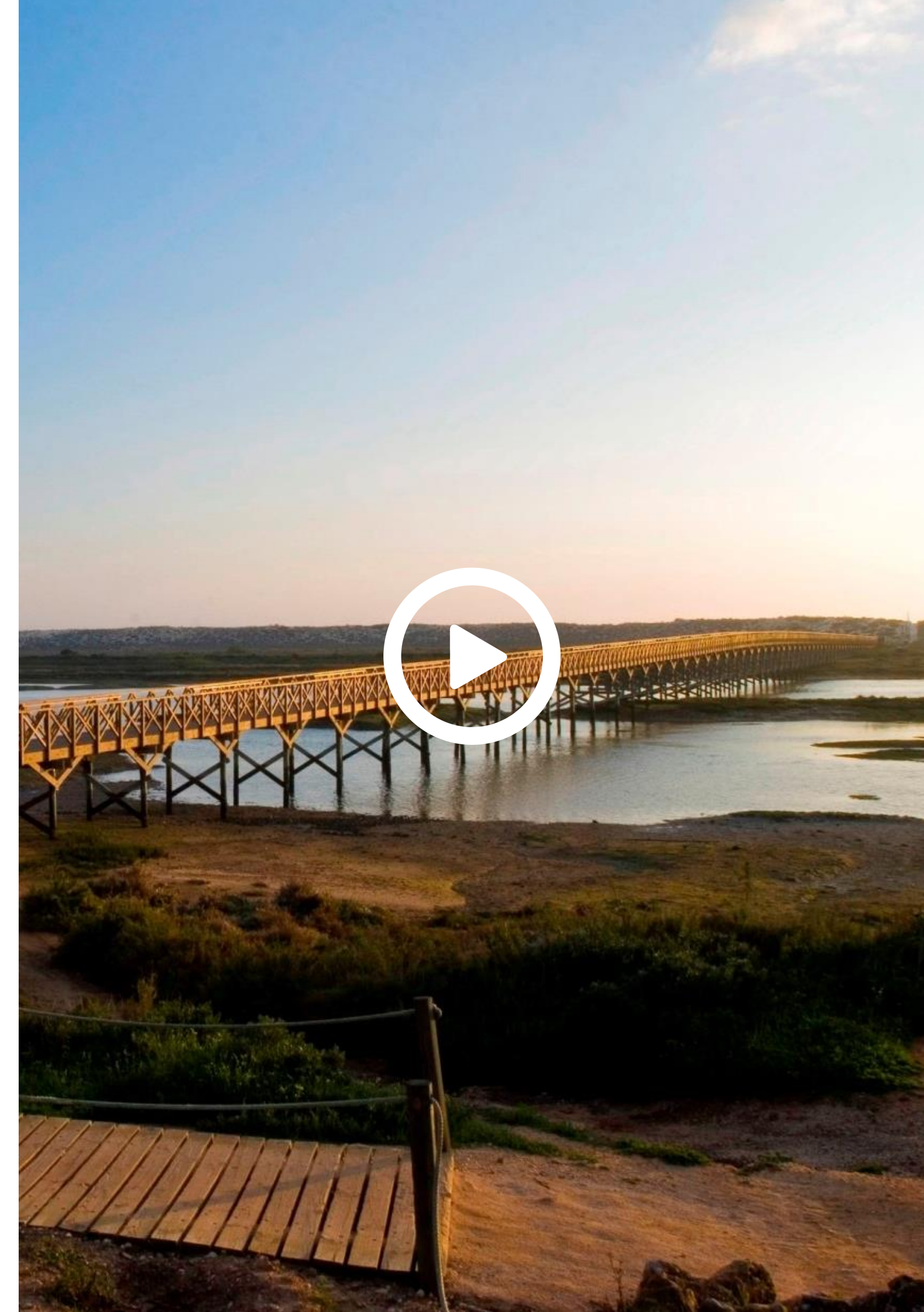


Algarve. The sun blessed destination

- The Algarve is the southernmost region on mainland Portugal, with an area of 5,412 square kilometers and approximately 450.000 habitants.
- More than five centuries of Moorish influences left their indelible imprint upon the region, beginning with its actual name: Al-Gharb, meaning The West.
- Warm climate with mild winters and on average 300 days of sunshine per year. Summer temperatures can reach above 30°C and winter temperatures stay between 10 – 18°C
- 38 golf courses including some of the most prestigious in the world such as Quinta do Lago

Flight Connections:

- | | |
|--------------------|-----------------------|
| • Lisbon.....00h30 | • London.....02h55 |
| • Madrid.....01h30 | • Amsterdam.....02h55 |
| • Paris.....01h30 | • Berlin.....03h30 |



Easy Access...by plane

...Airports UK

- Belfast
- Birmingham
- Bournemouth
- Bristol
- Cardiff
- Doncaster
- Edinburgh, Turnhouse
- Glasgow (Intern/Prestwick)
- Leeds
- Liverpool
- London (Gatwick/Luton/Stanstead)
- Manchester
- Newcastle
- Nottingham (East Midlands);
- Southampton
- Southend

...Airlines

- British Airways
- British Airways Cityflyer
- Monarch
- Norwegian
- Flybe
- Jet2
- Easyjet
- Ryanair

***The hotel is only 20min drive from Faro Airport**



Easy Access...by plane

...Airports Germany

- Berlin, Tegel - Air Berlin
- Cologne, Bonn - Germanwings
- Dusseldorf - Air Berlin/Eurowings / Germanwings / Tuifly
- Dusseldorf Weeze - Ryanair
- Frankfurt - Lufthansa / Tui fly
- Frankfurt, Hahn - Ryanair
- Hamburg - Air Berlin/Eurowings
- Hannover - Tuifly
- Munich - Air Berlin / Lufthansa / Transavia / Tuifly
- Munich, Memmingen - Ryanair
- Stuttgart – Germanwings / Tuifly

...Airports Austria

- Vienna – Eurowings / Nikki

...Airports Netherlands

- Amsterdam, Schiphol - Transavia
- Eindhoven - Transavia / Ryanair
- Groningen - Transavia
- Rotterdam - Transavia

...Airports Scandinavia

- Oslo (Norway) - Norwegian
- Stockholm (Sweden) - Norwegian/SAS
- Billund (Denmark) - Primera Air
- Copenhagen (Denmark) - Norwegian/SAS

*The hotel is only 20min drive from Faro Airport



Algarve

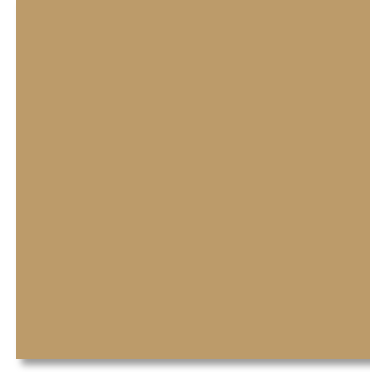
Europe's most famous secret



Quinta do Lago

One of the World's Elite Luxury Lifestyle Destinations





CONRAD[®]

ALGARVE

NEVER JUST STAY. STAY INSPIRED.



Located in the stylish Quinta do Lago, Conrad Algarve is nestled within two thousand acres of idyllic landscape in the Ria Formosa National Park. Designed for today's savvy and sophisticated traveller, the hotel allows guests an opportunity to enjoy an exceptional and bespoke experience offering a true opportunity to immerse into the Algarvian culture.

Conrad Algarve offers guests a luxurious break in the Algarve in a world of style, service and connection. The 154 room property evokes a true sense of place, from the 18th Century Portuguese palace design, to the local ingredients used in the spa and extensive gastronomic offerings.

A tailor-made retreat experience with a discreet yet engaging service in a striking contemporary property.

18th Century Portuguese Palace Architecture Inspiration



Contemporary interior design by Miguel Cancio Martins



Unique Outdoor Resort Areas



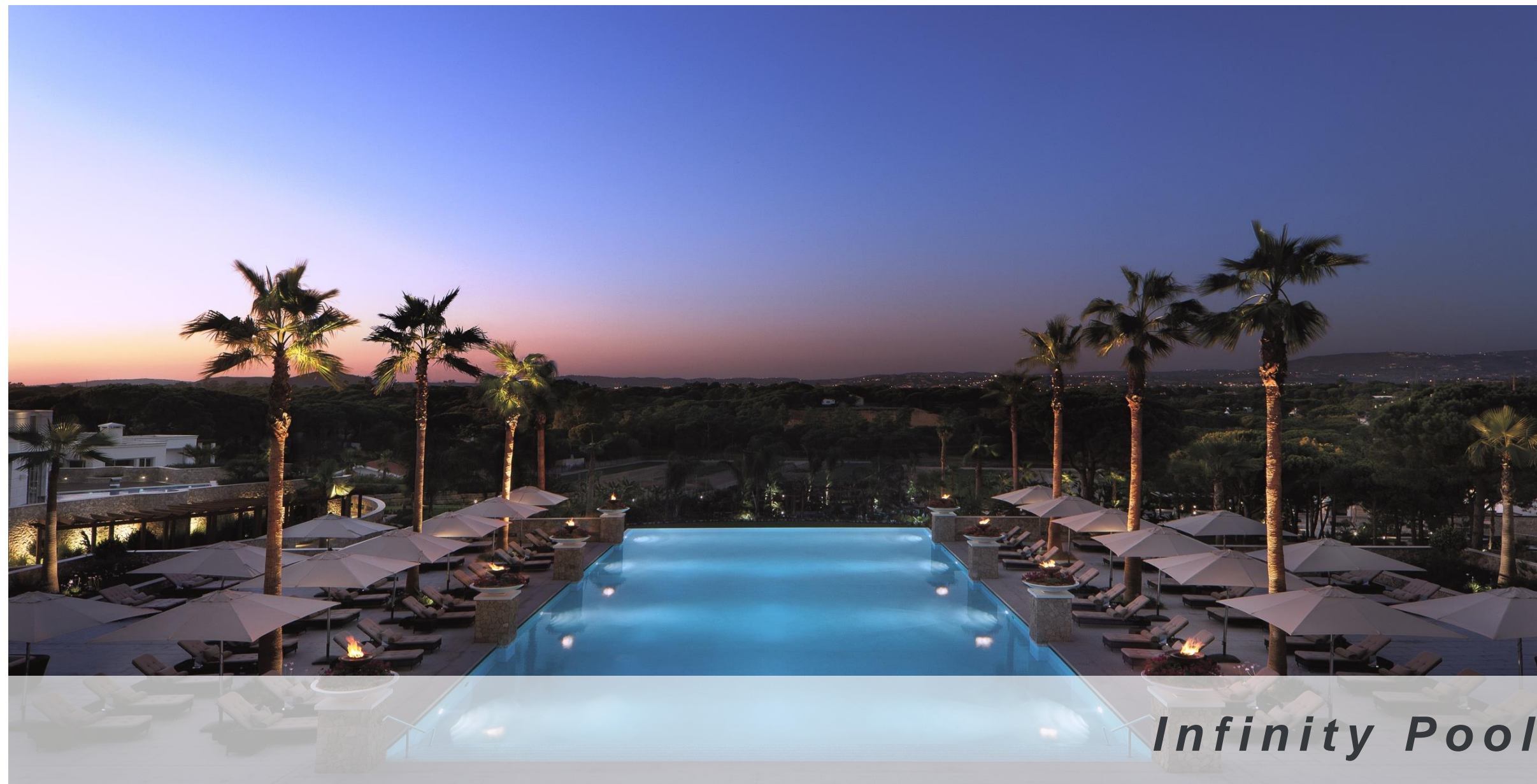
Pool View



Dado Pool



Main Entrance



Infinity Pool



Main Entrance

Total 154 Guest Rooms | 134 Deluxe Rooms | 18 Suites | 2 Signature Suites



Twin Deluxe



Deluxe Room



Deluxe Suite



Grand Deluxe Suite

Conrad Suite | 101sqm | Butler Service | Airport Transfer Service | Conrad SPA Access



Living Room / Bedroom



Bedroom



Living Room

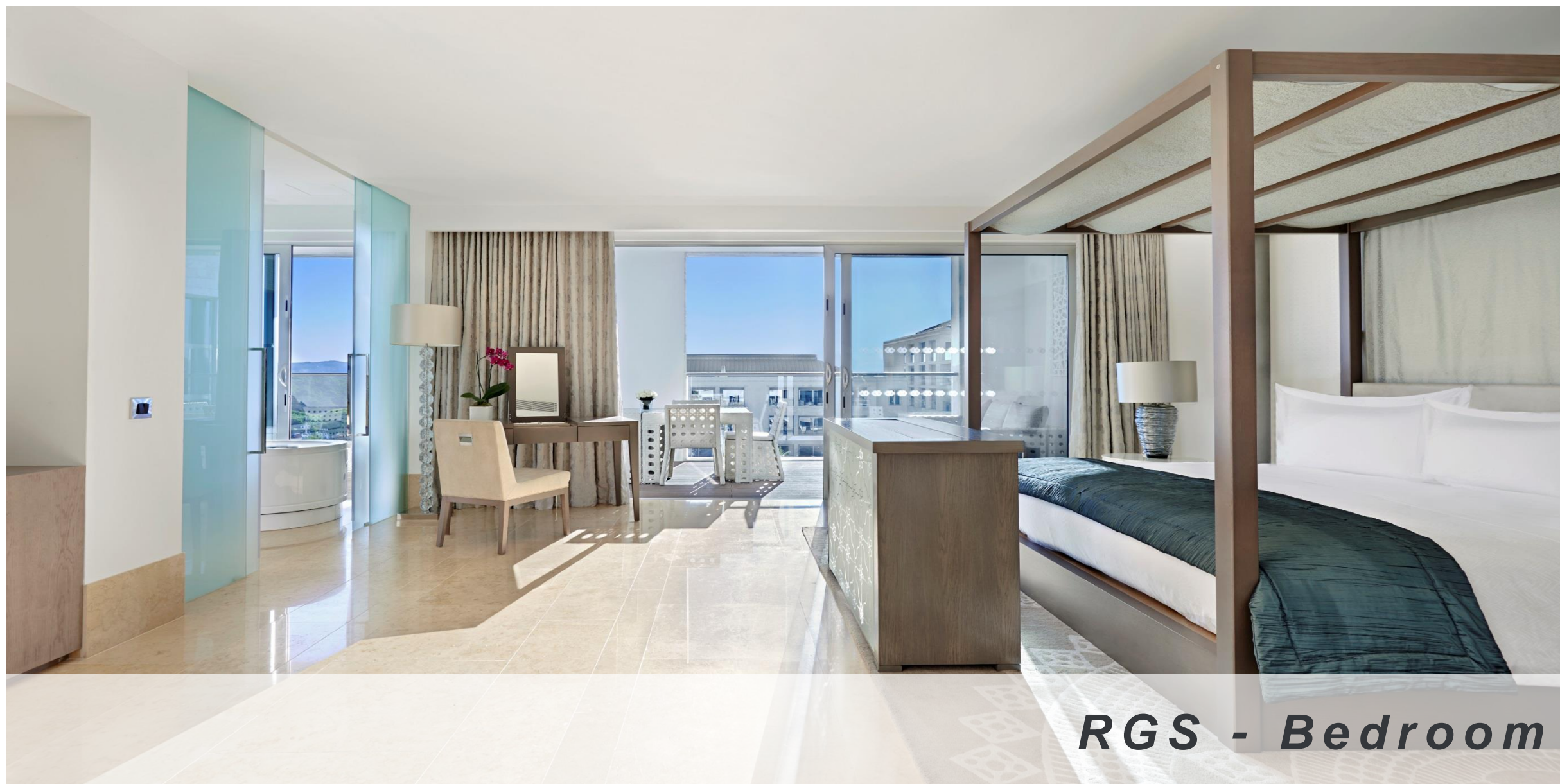
Roof Garden Suite | 480sqm | Private lift access to the SPA and private garage



RGS – Living Room



RGS – Terrace



RGS - Bedroom



RGS – Infinity Pool

Roof Garden Suite | 300 Sqm | Stylish and Spacious Suitable for Unique Events



Roof Garden Suite | 300 Sqm Inside | Stylish and Spacious Suitable for Unique Events



Roof Garden Suite | 180sqm | Outside Terrace



GUSTO by Heinz Beck | 3 star Michelin-starred Chef



Gusto by Heinz Beck

GUSTO by Heinz Beck | Mediterranean restaurant with Scandinavian inspired design



Louro Restaurant| Inspired by Portugal's rich culinary heritage



Louro Restaurant Restaurant

Louro Restaurant| Inspired by Portugal's rich culinary heritage



Louro Restaurant Restaurant

Ballroom | Natural Daylight | No Pillars | Modern AV | Outside Terrace | Inside Foyer



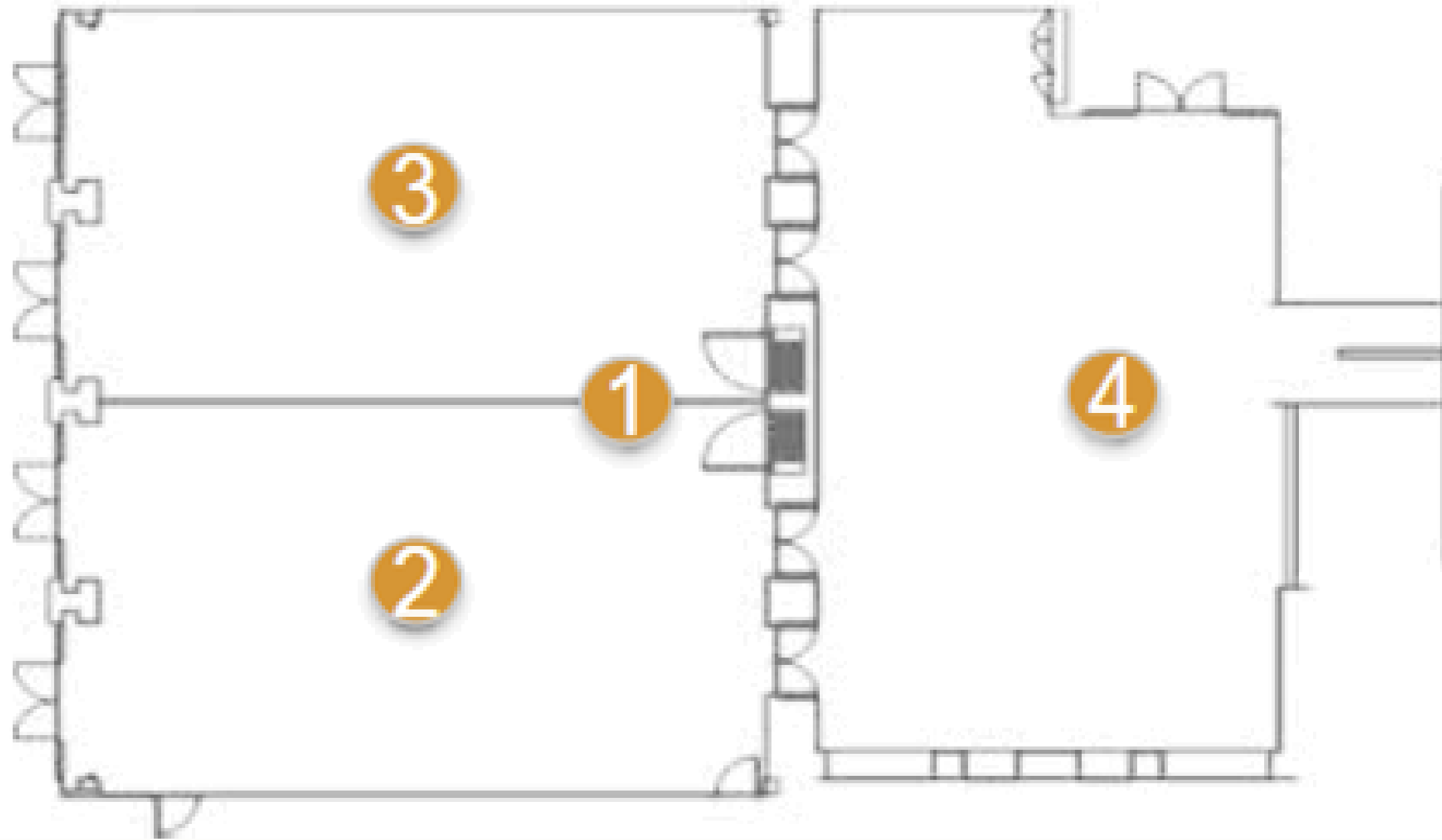
Ballroom - Theater

Ballroom | Natural Daylight | No Pillars | Modern AV | Outside Terrace | Inside Foyer



Ballroom - Banquet

Meeting Facilities | 1st Floor - Ballroom & Foyer



1 Ballroom

- Area: 300 m² / 3229 ft²
- Dimension: 4.4 x 5.9 m/14.6x19.6 ft
- Height: 5.03 m/ 16.5 ft
- Capacities:
 - 280 guests theatre
 - 200 guests banqueting
 - 150 guests classroom
 - 100 guests cabaret

2 3 Ballroom A/B

- Area: 149 m² / 1603.8 ft²
- Dimension: 4.4 x 2.9 m/14.6x9.7 ft
- Height: 5.03 m/ 16.5 ft
- Capacities:
 - 130 guests theatre
 - 100 guests banqueting
 - 74 guests classroom
 - 50 guest cabaret
 - 39 guests U-shape

4 Foyer

- Area: 181 m² / 1948 ft²
- Dimension: 3.0 x 4.8 m/14.6x9.7 ft

Breakouts | Natural Daylight | No Pillars | Modern AV | Outside Terrace | Inside Foyer



Oliveira I+II - U Shape Style

Breakouts | Natural Daylight | No Pillars | Modern AV | Outside Terrace | Inside Foyer



Figueira- Boardroom Style

Breakouts | Natural Daylight | No Pillars | Modern AV | Outside Terrace | Inside Foyer



Oliveira III - Theater Style

Meeting Space | Ground Floor - Breakout Rooms



1 Amendoeira

- Area: 19 m² / 204.5 ft²
- Dimension: 1.3x1.2 m/4.4x4.1 ft
- Capacities:
 - 8 guests boardroom

2 Laranjeira

- Area: 18 m² / 193.7ft²
- Dimension: 1.3x0.9 m/4.3x3.1 ft
- Capacities:
 - 8 guests boardroom

3 Figueira

- Area: 32 m² / 344.4 ft²
- Dimension: 2.4x1.2 m/7.9x4.1 ft
- Capacities:
 - 14 guests boardroom

4 Oliveira I

- Area: 41 m² / 441.32 ft²
- Dimension: 2.4x1.5 m/7.9x5 ft
- Capacities:
 - 35 guests theatre
 - 14 guests classroom
 - 14 guests U-shape
 - 16 guests boardroom

Meeting Space | Ground Floor - Breakout Rooms



5 6 Oliveira II/III

- Area: 41 m² / 441.31 ft²
- Dimension: 2.4x1.4 m/7.9x4.9 ft
- Capacities:
 - 35 guests theater
 - 14 guests classroom
 - 14 guests U-shape
 - 16 guests boardroom (except O III)

7 Oliveira combined

- Area: 120 m² / 1323 ft²
- Dimension: 2.4x4.5 m/7.9x14.9 ft
- Capacities:
 - 125 guests theater
 - 58 guests classroom
 - 43 guests U-shape
 - 64 guests banquet

8 Business Center

- Area: 67 m² / 721.18ft²
- Dimension: 3.2x2.1 m/10.6x6.9 ft
- Details:
 - Meeting butler

Tailor Made Events in Unique Spaces | Hotel Gardens



Hotel Gardens - Dado Q

Tailor Made Events in Unique Spaces | Hotel Gardens



Hotel Gardens - Dado Q

Tailor Made Events in Unique Spaces | Hotel Gardens



Hotel Gardens - Dado Q

Tailor Made Events in Unique Spaces | Hotel Gardens



Hotel Gardens - Dado Q

Tailor Made Events in Unique Spaces | Hotel Gardens



Tennis Court and Hotel Gardens

Tailor Made Events in Unique Spaces | Underground Car Park



Underground Car Park - Welcome Receptions

Tailor Made Events in Unique Spaces | Underground Car Park



Underground Car Park - Banqueting

Tailor Made Events in Unique Spaces | Covered Spaces



Services & Amenities

You will find a variety of leisure activities for you and your family to enjoy:

- ① Infinity pool
 - ① Covered pool
 - ① DADO pool (lower level pool)
 - ① Fitness Center
 - ① Tennis court
 - ① Golf concierge
 - ① Sports lounge (including a Golf shop)
 - ① Kids Club
 - ① Shuttle (seasonal) service to the beach and golf courses
 - ① High street shops across the road
 - ① Private parking area with 128 parking spaces
- } **Underwater music system**



Conrad SPA | Thermal Circuit | Outdoor Infinity Pool | 5 Treatment Rooms



Thermal Area



Outdoor Cabanas



Thermal Area



VIP Treatment Room



Fitness Centre

Little C Palace | Kids Outdoor Playground | Nannie's Lounge



Little C Palace

- Designed by and for the kids
- Children aged 3 to 12
- Toddler Area
- Kids menu
- Fun activities
- Swimming-pool games
- Bedroom experience
- Special bath and room amenities and daily surprises



Kids Outdoor Playground

Conrad 1/3/5 | Stay Inspired with Authentic Experiences

At Conrad, we understand that traveling isn't just about the destination, it's about the journey. And how you use every moment. Each experience reflects a local take on culture, art, food, and adventure, so you can make the most of your trip, even when time is at a premium. Guests don't just come to stay, relax or play golf, they come to discover and be inspired by the real Algarve, while immersing themselves in the highest levels of style and sophistication.





Clam Picking



Cork Route



Wine Academy



Off Road Kart Cross



Market Chef



Portuguese Water Dogs



Click the image and immerse in the Truly Algarvian Enrichment!

World's Best Golf Destination



Quinta do Lago Laranjal



Quinta do Lago North



Quinta do Lago South



Monte Rei



Vale do Lobo Ocean



Vale do Lobo Royal

134
GUESTROOMS
18 SUITES
2 SIGNATURE SUITES:
THE CONRAD SUITE AND ROOF
GARDEN SUITE

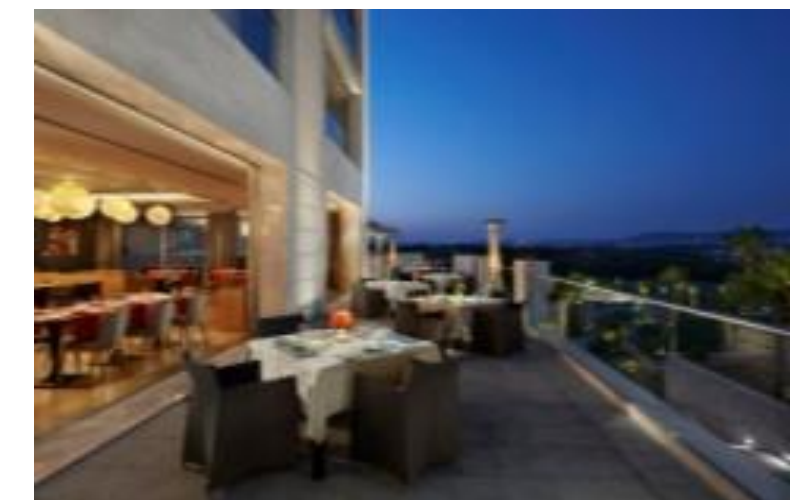


**Tailor made events
in unique spaces**

- Roof garden
- Suite terrace
- Dado pool deck
- DadoQ
- Indoor pool
- Tempo sports lounge



Gusto by Heinz Beck
Contemporary
Mediterranean dining
concept developed by
the 3 Michelin-starred
Chef Heinz Beck

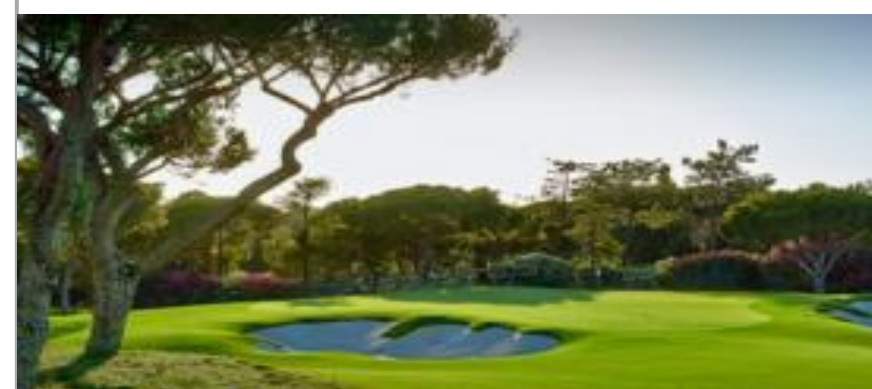


Technology

flows in meeting rooms and through the hotel



7
RESTAURANTS
AND BARS



GOLF

Near some of the best golf
courses in Europe



Louro Restaurant
*Delicious fresh food
inspired by Portuguese
culinary heritage*

6

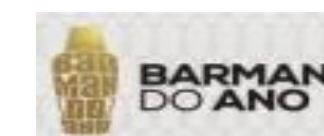
MEETING
ROOMS
1 BALLROOM



**Dado and
Serenio**
*Pool-side and
Cocktail bars to
enjoy a beautiful
Algarve sunrise or
sunset*



LEISURE
Heated indoor pool
Heated half Olympic length
outdoor infinity pool
Tennis court
Spa



Transfer Options from Lisbon to Algarve

Conrad Algarve provide an array of tailor-made options to bring guests from Lisbon, in comfort and style experiencing the culture, gastronomy and historical sites from the south of Portugal.

- ① **Coach or Mini-Shuttle bus:** Explore the beautiful landscapes, gastronomy and wine delights of Tagus region and Alentejo.
- ② **Limousine:** VIP clients can enjoy a luxury and private transfer to the Algarve.
- ③ **Helicopter transfers** from Lisbon airport: Private helicopter charter fully coordinated by our team.
- ④ **Private Jet Rental | Commercial Jet | Group Travel:** From small private jets to luxury private jets we have the solution for your needs, fully coordinated by our team.
- ⑤ **Rental car fleet:** For bigger groups fully coordinated by our team.
- ⑥ **Panoramic train trip:** Clients can appreciate a very scenic route, including amazing views from the countryside.



CONRAD[®]
ALGARVE

NEVER JUST STAY. STAY INSPIRED.