



## SUITE DESCRIPTIONS

*7 Pines*  
Resort  Ibiza



## RESORT MAP





# THE LAGUNA

Comprised of 42 suites, The Laguna is a resort within the resort featuring one and two-bedroom suites set around the central Laguna Pool.

**SUITES IN THE LAGUNA INCLUDE:**

- › Laguna Suite
- › Laguna Suite Sea View
- › Laguna Suite Swim up
- › Laguna Suite – 2 Bedrooms
- › Laguna Suite Sea View – 2 Bedrooms



## LAGUNA SUITE

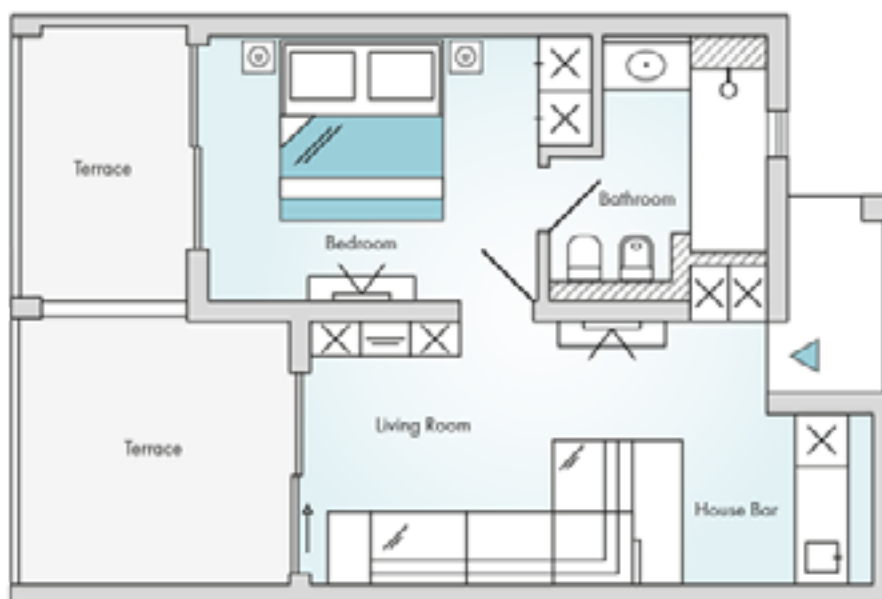
### DESCRIPTION

#### *Ground floor - terrace*

Located on the ground floor, these suites are spread around The Laguna and consist of a living area with a House Bar opening on a covered terrace and a separate bedroom with en-suite bathroom.

### FACTS & FIGURES

- › 13 Laguna Suites
- › Suite size of 48 m<sup>2</sup>
- › All suites feature a spacious terrace
- › Separate living room and bedroom
- › King or Twin bedding
- › Maximum capacity: 2 guests + 1 child or infant upon request



*Please understand that the layout displayed above is a sample of the suite category.  
The shape might vary according to the location of the suite.*



## LAGUNA SUITE SEA VIEW

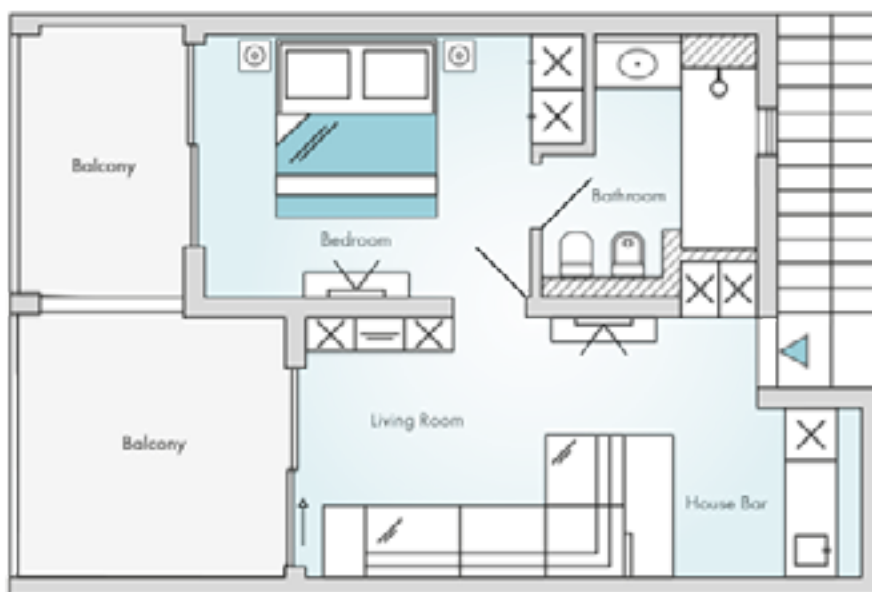
### DESCRIPTION

*1st floor - balcony - sea view*

Spread around the first floor of The Laguna with breathtaking views of the the sea and Es Vedrà, these suite provide a separate living area with a House Bar opening on a balcony, ideal to soak up the Ibiza atmosphere.

### FACTS & FIGURES

- › 13 Laguna Suites Sea View
- › Suite size of 48 m<sup>2</sup>
- › All suites feature a spacious balcony
- › Separate living room and bedroom
- › King or Twin bedding
- › Maximum capacity: 2 guests + 1 child or infant upon request



*Please understand that the layout displayed above is a sample of the suite category.  
The shape might vary according to the size and location of the suite.*



# LAGUNA SUITE SWIM UP

## DESCRIPTIONS

*Ground floor with terrace, garden and shared swim up pool*

Located at the ground level on the outward edge of The Laguna, these suites feature a covered terrace with own garden and access to a shared swim up pool. Inside, the open plan living area features a House Bar and a separate bedroom with en-suite bathroom.

## FACTS & FIGURES

- › 10 Laguna Suites Swim Up
- › Suite size of 48 m<sup>2</sup>
- › All suites feature a terrace, a garden and access to a shared swim up pool
- › Separate living room and bedroom
- › King or Twin bedding
- › Maximum capacity: 2 guests + 1 child or infant upon request



*Please understand that the layout displayed above is a sample of the suite category.  
The shape might vary according to the location of the suite.*



## LAGUNA SUITE – 2 BEDROOM

### DESCRIPTION

*Ground floor - terrace*

Located at the ground floor of The Laguna, these suites feature a living area with a House Bar opening on a terrace and garden, and two bedrooms with en-suite bathrooms.

### FACTS & FIGURES

- › 4 Laguna Suites - 2 bedrooms
- › Suite size of 72 m<sup>2</sup>
- › All suites feature a spacious terrace
- › Separate living room and bedrooms
- › King or Twin bedding
- › Maximum capacity: 4 guests



*Please understand that the layout displayed above is a sample of the suite category.  
The shape might vary according to the location of the suite.*



# LAGUNA SUITE SEA VIEW – 2 BEDROOM

## DESCRIPTION

*1st floor - balcony - sea view*

Spread around the first floor of The Laguna, these suites feature beautiful sea views to be enjoyed from a large balcony, an open living area with a House Bar and two bedrooms with en-suite bathrooms.

## FACTS & FIGURES

- › 2 Laguna Suites Sea View - 2 bedrooms
- › Suite size of 72 m<sup>2</sup>
- › All suites feature a spacious balcony
- › Separate living room and bedrooms
- › King or Twin bedding
- › Maximum capacity: 4 guests



*Please understand that the layout displayed above is a sample of the suite category.  
The shape might vary according to the location of the suite.*





# IBICENCO VILLAGE

The Ibicenco Village features 144 one and two-bedroom suites distributed in 39 traditional whitewashed houses spread around the resort and surrounded by lush gardens. Each house consists of 3 or 4 suites depending on the suites layout, with the exception of the Cliff Suites for which the configuration is 2 duplex suites per house.

Suites in the Ibicenco Village include:

- › Resort Suite
- › Resort Suite Deluxe
- › Garden Suite
- › Garden Suite Deluxe
- › Resort Suite Sea View
- › Resort Suite Sea View Deluxe
- › Garden Pool Suite
- › Garden Pool Suite Deluxe
- › Garden Pool Suite 2 Bedrooms
- › Cliff Suite Duplex
- › Cliff Suite Duplex Deluxe



# RESORT SUITE

## DESCRIPTION

*1st floor - balcony - garden and resort views*

Located on the first floor of our traditional whitewashed houses and spread across the Ibicenco Village, these suites offer a large living area with a House Bar opening on a furnished balcony from where to enjoy resort and garden views. Upgrade your space with our Resort Suite Deluxe (65 sqm).

## FACTS & FIGURES

- › 26 Resort Suites
- › Suite size of 54 m<sup>2</sup>
- › All suites feature a spacious balcony
- › Separate living room and bedroom
- › King or Twin bedding
- › Maximum capacity: 2 guests + 1 child or infant upon request



*Please understand that the layout displayed above is a sample of the suite category.  
The shape might vary according to the location of the suite.*



# RESORT SUITE DELUXE

## DESCRIPTION

*1st floor – balcony - garden and resort views*

Located on the first floor of our traditional whitewashed houses and spread across the Ibicenco Village, these suites, ideal for families or longer stays, offer a larger bedroom as well as living space with a House Bar and a furnished balcony from where to enjoy resort and garden views.

## FACTS & FIGURES

- › 26 Resort Suites Deluxe
- › Suite size of 65 m<sup>2</sup>
- › All suites feature a spacious balcony
- › Separate living room and bedroom
- › King or Twin bedding
- › Maximum capacity: 2 guests + 1 child or infant upon request



*Please understand that the layout displayed above is a sample of the suite category. The shape might vary according to the location of the suite.*



# GARDEN SUITE

## DESCRIPTION

*Ground floor - terrace - garden*

Located at the ground level of our traditional whitewashed houses and spread across the Ibicenco Village, these suites offer a large living space with a House Bar opening on a covered and furnished terrace surrounded by its own garden. Upgrade your space with our Garden Suite Deluxe (65 sqm).

## FACTS & FIGURES

- › 27 Garden Suites
- › Suite size of 54 m<sup>2</sup>
- › All suites feature a terrace and own garden
- › Separate living room and bedroom
- › King or Twin bedding
- › Maximum capacity: 2 guests + 1 child or infant upon request



*Please understand that the layout displayed above is a sample of the suite category. The shape might vary according to the location of the suite.*



# GARDEN SUITE DELUXE

## DESCRIPTION

*Ground floor - terrace - own garden*

Located at the ground level of our traditional whitewashed houses and spread across the Ibicenco Village, these suites, ideal for families or longer stays, offer a larger bedroom and living space with a House Bar opening on a furnished terrace surrounded by its own garden.

## FACTS & FIGURES

- › 26 Garden Suites Deluxe
- › Suite size of 65 m<sup>2</sup>
- › All suites feature a terrace and own garden
- › Separate living room and bedroom
- › King or Twin bedding
- › Maximum capacity: 2 guests + 1 child or infant upon request



*Please understand that the layout displayed above is a sample of the suite category.  
The shape might vary according to the location of the suite.*



# RESORT SUITE SEA VIEW

## DESCRIPTION

*1st floor - balcony - partial sea view*

Located on the first floor of our traditional whitewashed houses and spread across the Ibicenco Village, these suites offer a House Bar overlooking a large living room which opens on a furnished balcony from where to enjoy partial sea views. Upgrade your space with our Resort Suite Sea View Deluxe (65 sqm).

## FACTS & FIGURES

- › 11 Resort Suites Sea View
- › Suite size of 54 m<sup>2</sup>
- › All suites feature a spacious balcony and sea views
- › Separate living room and bedroom
- › King or Twin bedding
- › Maximum capacity: 2 guests + 1 child or infant upon request



*Please understand that the layout displayed above is a sample of the suite category.  
The shape might vary according to the location of the suite.*



# RESORT SUITE SEA VIEW DELUXE

## DESCRIPTION

*1st floor - balcony - partial sea view*

Located on the first floor of our traditional whitewashed houses and spread across the Ibicenco Village, these suites, ideal for families or longer stays, offer a larger bedroom and living space with a House Bar opening on a furnished balcony complemented by partial sea views.

## FACTS & FIGURES

- › 11 Resort Suites Sea View Deluxe
- › Suite size of 65 m<sup>2</sup>
- › All suites feature a spacious balcony and sea views
- › Separate living room and bedroom
- › King or Twin bedding
- › Maximum capacity: 2 guests + 1 child or infant upon request



*Please understand that the layout displayed above is a sample of the suite category.  
The shape might vary according to the location of the suite.*



# GARDEN POOL SUITE

## DESCRIPTION

*Ground floor - own garden and pool*

Located at the ground level of our traditional whitewashed houses and spread across the Ibicenco Village, these suites offer a large living space with a House Bar opening on a covered and furnished terrace surrounded by a garden and own pool. Upgrade your space with our Garden Pool Suite Deluxe (65 sqm).

## FACTS & FIGURES

- › 2 Garden Pool Suites
- › Suite size of 54 m<sup>2</sup>
- › All suites feature a terrace, garden and own pool
- › Separate living room and bedroom
- › King or Twin bedding
- › Maximum capacity: 2 guests + 1 child or infant upon request



*Please understand that the layout displayed above is a sample of the suite category.  
The shape might vary according to the location of the suite.*





# GARDEN POOL SUITE DELUXE

## DESCRIPTION

*Ground floor - own garden and pool*

Located at the ground level of our traditional white-washed houses and spread across the Ibicenco Village, these suites, ideal for families or longer stays, offer a larger bedroom and living space with a House Bar opening on a furnished terrace surrounded by a garden and own pool.

## FACTS & FIGURES

- › 3 Garden Pool Suites Deluxe
- › Suite size of 65 m<sup>2</sup>
- › All suites feature a terrace, garden and own pool
- › Separate living room and bedroom
- › King or Twin bedding
- › Maximum capacity: 2 guests + 1 child or infant upon request



*Please understand that the layout displayed above is a sample of the suite category.  
The shape might vary according to the location of the suite.*



## GARDEN POOL SUITE – 2 BEDROOMS

### DESCRIPTION

*Ground floor - own garden and pool*

Located at the ground level of our traditional whitewashed houses and spread across the Ibicenco Village, these suites are ideal for families or friends in the look for space and features two bedrooms with en-suite bathrooms and one guest bathroom, a large living area with a House Bar, seating space opening on a furnished terrace complemented by a lush garden and its own pool.

### FACTS & FIGURES

- › 8 Garden Pool Suites - 2 bedrooms
- › Suite size of 119 m<sup>2</sup>
- › All suites feature a spacious terrace, garden and own pool
- › Separate living room and bedrooms
- › King or Twin bedding
- › Maximum capacity: 4 guests + 1 child or infant upon request



*Please understand that the layout displayed above is a sample of the suite category.  
The shape might vary according to the location of the suite.*



## CLIFF SUITE DUPLEX – 2 BEDROOMS

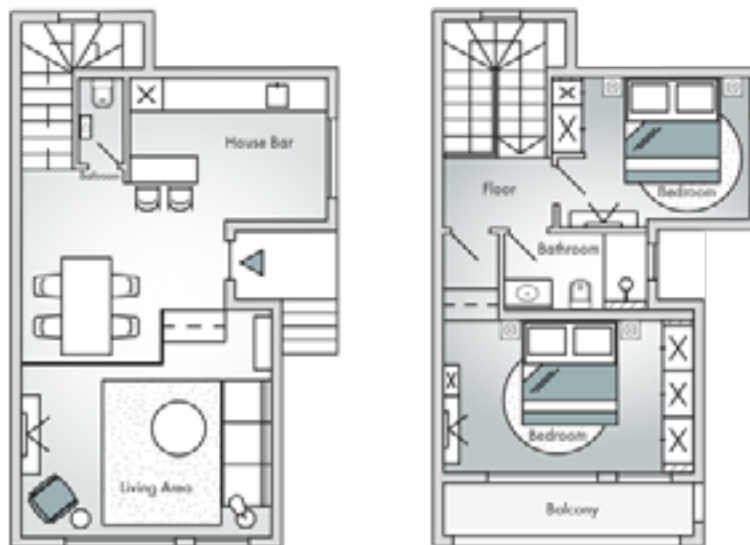
### DESCRIPTION

*Two bedroom - Best views to the sea and Es Vedrà*

Located in a privileged area of the resort at the edge of the Ibicenco Village and right atop the cliff, these suites offer unparalleled panoramic sea views and cozy, Ibicenco infused living area with a House Bar, a furnished terrace and garden. The first floor features two bedrooms including a master bedroom with a wide window opening to the sea, and one bathroom.

### FACTS & FIGURES

- › 2 Cliff Suite Duplex- 2 bedrooms
- › Suite size of 74 m<sup>2</sup>
- › All suites feature a terrace, garden and balcony
- › Separate living room and bedrooms
- › King or Twin bedding
- › Maximum capacity: 4 guests + 1 child or infant upon request



*Please understand that the layout displayed above is a sample of the suite category.  
The shape might vary according to the location of the suite.*



# CLIFF SUITE DUPLEX DELUXE – 2 BEDROOMS

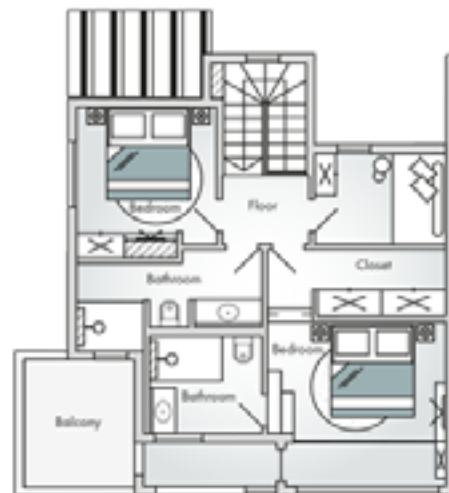
## DESCRIPTION

*Two bedrooms - best sea views*

Located in a privileged area of the resort at the edge of the Ibicenco Village and right atop the cliff, these suites offer a spacious living area exuding Ibiza vibes, with spectacular sea views. The two leveled, open living area features a House Bar and dining table and a large seating area. Outside, a furnished terrace provides a summer living room while the first floor consists of two bedrooms and two bathrooms.

## FACTS & FIGURES

- › 2 Cliff Suites Duplex Deluxe – 2 bedrooms
- › Suite size of 124 m<sup>2</sup>
- › All suites feature a spacious terrace, garden and balcony
- › Separate living room and bedrooms
- › King or Twin bedding
- › Maximum capacity: 4 guests + 1 child or infant upon request



*Please understand that the layout displayed above is a sample of the suite category.  
The shape might vary according to the location of the suite.*



# WE LOOK FORWARD TO WELCOMING YOU SOON

7Pines Resort Ibiza  
Calle Puig Delfin s/n  
07830 Sant Josep de sa Talaia  
Ibiza - Spain  
+34 971 195 200  
[www.7pines-ibiza.com](http://www.7pines-ibiza.com)  
[reservations.ibiza@7pines.com](mailto:reservations.ibiza@7pines.com)



THE LEADING HOTELS  
OF THE WORLD®